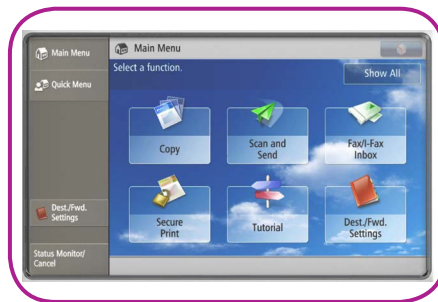


imageRUNNER ADVANCE C3320, C3320i, C3325i, C3330i

Compact and productive colour output

The imageRUNNER ADVANCE C3300 series delivers quality colour communication in a small footprint. Easy integration, security and cost control features combined with top energy efficiency make it the perfect choice for small workgroups.



Control costs:

- Technology designed to reduce total cost of print
- Multifunctional with compact design
- User activity tracking provides visibility of print behaviour
- Apply policies and restrict usage at function level by user
- Options for cost recovery and coin vending integration
- Tight integration with output management solutions such as uniFLOW
- Device Management tools to reduce the administration burden of your fleet

Secure confidential information:

- Award-winning and smart user authentication ensures control without impacting on user productivity or convenience
- Ability to disable functions by user to prevent unauthorised usage
- Secure Print and Mailbox enhance document confidentiality
- A variety of standard features like data erase, IP and MAC address filtering and IPSec protects the device and network data transfer
- An extensive range of security options offers compliance to the highest levels covering all aspects of information security.
- Industry-first Data Loss Prevention and auditing of prints, copies, scans and faxes through uniFLOW.



PRINT



COPY



FAX

Optional on
all models



SCAN

Canon

Compact and productive colour output

imageRUNNER ADVANCE C3320, C3320i, C3325i, C3330i

Streamline document workflows:

- Unrivalled and consistent user experience through a large 17.8 cm tiltable colour touch screen and intuitive menus
- Unique personalisation capabilities simplify and automate commonly performed tasks by user
- Effortless, rapid scanning captures paper-based documents with ease
- Standard support for Searchable PDF and conversion into a range of formats including Office Open XML PPT and Word, enables re-use and re-purpose of digital content
- Integration with powerful document, capture and output management solutions provide process optimisation
- Users can create professional-looking booklets and finished documents automatically
- Convenient Staple-on-demand functionality
- Reduce waste with Staple-less Eco stapler
- Support for mobile working

Achieve stunning results:

- Robust design and engine
- Perfect for handling workloads of busy workgroups.
- V² (Vivid & Vibrant) imaging technology ensures documents impress time after time and stand out from the rest.

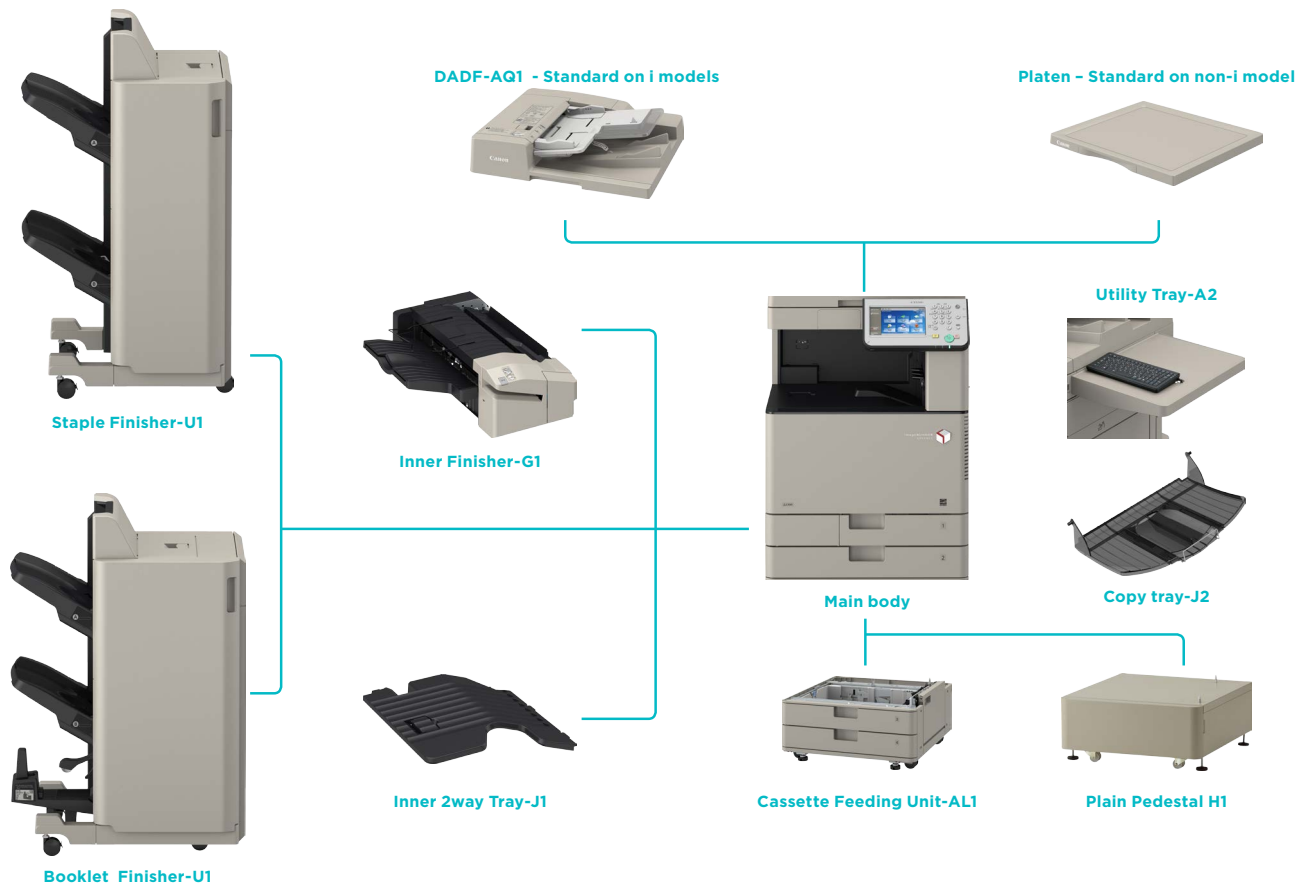
Manage devices efficiently:

- Supports industry and network standards i.e. PCL and Adobe PostScript for seamless integration
- Shares resources and functionality with other imageRUNNER ADVANCE devices on the network
- Collaborates with business applications and external systems in the Cloud
- Through the embedded MEAP platform the device integrates tightly with a range of powerful software solutions
- Consistent device management tools across the imageRUNNER ADVANCE platform allow easy configuration, management and upgrading of devices, whether individually, or as part of a larger fleet.
- Proactive and efficient maintenance through monitoring, reporting and diagnosis
- Low maintenance design ensures less downtime

Environmentally responsible:

- Class leading Typical Electricity Consumption (TEC) ratings
- Consumes as little as 1W in sleep mode
- Incorporates recycled materials and bio-plastics
- ENERGY STAR® qualified.

Main configuration options



Technical Specifications

imageRUNNER ADVANCE C3320, C3320i, C3325i, C3330i

Machine type	Colour A3 Multifunctional (Reader / Printer standard)	Copy resolution	Reading: 600 dpi x 600 dpi Printing: 1200 dpi x 1200 dpi for characters / lines, 600 dpi x 600 dpi for graphics / images
Available core functions	Print, Copy, Scan, Send*, and Optional Fax (*Optional on C3320)	Multiple copy	Up to 999 copies
Printer Specifications		Reduction/Enlargement	Zoom: 25-400% in 1% increments Fixed Zoom Ratio: 25%, 50%, 70%, 100%, 141%, 200%, 400%
Print speed (BW/Colour)	C3330i: Up to 30/30ppm (A4 single sided) Up to 15/15ppm (A3 single sided) Up to 20/20ppm (A4R single sided) 4-30/4-30ppm (A5R single sided) C3325i: Up to 25/25ppm (A4 single sided) Up to 15/15ppm (A3 single sided) Up to 20/20ppm (A4R single sided) 4-25/4-25ppm (A5R single sided) C3320/i: Up to 20/20ppm (A4 single sided) Up to 15/15ppm (A3 single sided) Up to 20/20ppm (A4R single sided) Up to 20/20ppm (A5R single sided) 4-20/4-20ppm (A5R single sided)	Scan Specifications	C3330i / C3325i / C3320i: Standard DADF 100 sheets: DADF-AQ1 C3320: Standard with Platen Glass Cover. (Optional DADF 100 sheets: DADF-AQ1) A3, A4, A4R, A5, A5R, B5, Custom sizes (W x L): Max. 297 mm x 432 mm Min. 139.7 mm x 128 mm
Printing method	Colour Laser Beam Printing	Supported media size/s	Single-sided scanning: *with DADF-AQ1 BW originals and mixed-sized: 64 to 128 gsm Colour originals and mixed-sized: 64 to 128 gsm Double-sided scanning: *with DADF-AQ1 BW originals and mixed-sized: 50 to 128 gsm Colour originals and mixed-sized: 64 to 128 gsm
Print resolution	1200 dpi x 1200 dpi, 600 dpi x 600 dpi	Supported media weight/s	100dpi, 150dpi, 200 x 100 dpi, 200dpi, 300dpi, 200 x 400 dpi, 400dpi, 600dpi
Double sided printing	Automatic (Standard)	Scan resolution	2-sided to 2-sided (Automatic) *C3320 requires DADF-AQ1
Direct print	Direct printing available from USB memory key, Remote UI and Web Access* ¹ Supported file types: JPEG, TIFF, PDF* ² , XPS* ² (* ¹ XPS print from websites is not supported) (* ² PDF/XPS requires DIRECT PRINT KIT (for PDF/XPS)-H1 for C3320)	Double sided scanning	Single-sided scanning: *with DADF-AQ1 30/30ipm (A4, 600dpi x 600dpi), 55/55ipm (A4, 300dpi x 300dpi) Double-sided scanning: *with DADF-AQ1 15/15ipm (A4, 600dpi x 600dpi), 27.5/27.5ipm (A4, 300dpi x 300dpi)
Printing from internet connected devices	A range of software and MEAP-based solutions is available to provide printing from mobile or internet-connected devices and cloud-based services depending on your requirements. [†]	Scan speed (BW/Colour)	Push Scan: Integration with a range of optional MEAP-based capture software, Pull Scan, Scan to USB Memory Key, Scan to mobiles, internet-connected devices and cloud-based services. [†]
Paper input (Standard)	2 x 550-sheet (80 gsm) cassette, 100-sheet (80 gsm) multi-purpose tray	Scan methods	Colour Network ScanGear2. For both Twain and WIA and 32/64bit Windows OS
Paper input (Option)	2 x 550-sheet (80 gsm) cassette (Cassette Feeding Unit-AL1)	Pull scan specifications	Supported OS: Windows XP*1/Vista/8/8.1/7/Server 2003/Server 2003R2/Server 2008/Server 2008R2/Server 2012/Windows Server 2012R2
Maximum paper input capacity	2,300 sheets (80gsm)		*The drivers are available via http://software.canon-europe.com . *1 Windows XP support of printer driver will end on April 7, 2015.
Paper output capacity	Standard Output Tray: 250 sheets (80 gsm) Optional -Copy Tray*: 100 sheets (80 gsm) -Inner 2Way Tray*: 100 sheets (80 gsm) -Inner Finisher*: 600 sheets (upper tray: 100 sheets, lower tray: 500 sheets) (80 gsm) -External Finisher*: 2,000 sheets (upper tray: 1,000 sheets, lower tray: 1,000 sheets) (80 gsm) *Requires 3Way Unit for C3320.	Send Specifications	
Finishing capabilities	Standard: Collate, Group With optional finishing units: Collate, Group, Offset, Staple, Eco Staple*, Staple-on-demand, Saddle Stitch (*Eco staple supported by Inner Finisher only)	Optional/Standard	C3330i / C3325i / C3320i: Standard C3320: Optional: Requires COLOUR UNIVERSAL SEND KIT-AA1
Supported media types	Cassette/s: Thin paper, Plain paper, Recycled paper, Colour paper, Heavy paper, Pre-punched paper, Bond paper, Envelopes Multi-purpose tray: Thin paper, Plain paper, Recycled paper, Colour paper, Heavy paper, Pre-punched paper, Bond paper, Transparency, Labels, Envelopes, Postcards, Tracing paper, Coated paper	Send resolution	100dpi, 150dpi, 200dpi x 100 dpi, 200dpi, 300dpi, 200dpi x 400 dpi, 400dpi, 600dpi
Supported media sizes	Paper cassette 1: A4, Custom sizes (139.7 mm x 182 mm to 297mm x 215.9 mm) Paper cassettes 2, 3 and 4: A4, A4R, A3, A5R, B5, Custom Size: 139.7 mm x 182 mm to 304.8 mm x 457.2 mm Envelopes*: No.10 (COM10), Monarch, ISO-C5, DL (*Envelope support via paper cassette 1&2 only.) Multi-purpose tray: A4, A4R, A3, SRA3, A5, A5R, Custom size: 98.4 mm x 139.7 mm to 320 mm x 457.2 mm Envelopes: No.10 (COM10), Monarch, ISO-C5, DL	Destinations	E-Mail/Internet FAX (SMTP), Fax (optional), PC (SMB, FTP, WebDAV), connection to a range of Cloud-based services
Supported media weights	Paper cassette 1, 2, 3 and 4: 52 to 220 gsm Multi-purpose tray: 52 to 256 gsm Multi-purpose tray: 256 to 300 gsm (requires optional MEDIA ADJUSTMENT KIT-A1) Duplex: 52 to 220 gsm	Address Book/Speed dials	LDAP (Max. 2000 searchable), Local (Max. 1800 including 200 Speed dials)
Page Description Language(s)	UFR II PCL5c/6 (Optional for C3320 Requires PCL PRINTER KIT BB1) Adobe PostScript Level 3 (Optional for C3320 Requires PS PRINTER KIT BB1)	File formats	TIFF, JPEG, PDF, XPS, PDF / XPS (compact), PDF / A-1b, Searchable PDF / XPS, Office Open XML (PowerPoint, Word)
Fonts	PCL fonts: 93 Roman, 10 Bitmap, 2 OCR fonts, Andale 4 (requires optional PCL International Font Set-A1) PS fonts: 136 Roman fonts	Optional Universal Send Feature Sets	UNIVERSAL SEND ADVANCED FEATURE SET-E1 UNIVERSAL SEND SECURITY FEATURE SET-D1 UNIVERSAL SEND DIGITAL USER SIGNATURE KIT-C1
Operating System compatibility ^{1,2}	UFR II: Windows XP*/Server 2003/Server 2003 R2/Vista/Server 2008/7/Server 2008R2/8/8.1/Server 2012/Server 2012R2, MAC OS X (10.5.8 or later) PCL: Windows XP*/Server 2003/Server 2003 R2/Vista/Server 2008/7/Server 2008 R2/8/8.1/Server 2012/Server 2012R2 PS: Windows XP*/Server 2003/Server 2003 R2/Vista/Server 2008/7/Server 2008 R2/Windows8/8.1/Server 2012/Server 2012R2, MAC OS X (10.5.8 or later) PPD: MAC OS 9.1 or later, MAC OS X (10.3.9 or later), Windows XP*/Vista/7/8	Fax Specifications	Optional requires SUPER G3 FAX BOARD-AR1 Super G3 33.6 kbps (Up to 3 seconds per page*) Standard: 200 dpi x 100 dpi Fine: 200 dpi x 200 dpi Super fine: 200 dpi x 400 dpi Ultra fine: 400 dpi x 400 dpi
Copy Specifications		Fax memory	Up to 6000 pages ³
Copy speed (BW/Colour)	Please, refer to the quoted print speeds	Speed dials	Max. 200
First Copy Output Time FCOT) (BW/Colour)	Black and White: 5.9 sec Colour: 8.2 sec	Group dials/destinations	Max. 199 dials
		Sequential broadcast	Max. 256 addresses
		Memory backup	Yes
		Other features	Fax Forwarding, Dual Access, PC Fax (TX only)
		General Specifications	
		Warm-up time	34 sec or less from Power ON, 10 sec or less from Power ON (Quick Start mode)
		Recovery from sleep mode	10 seconds or less
		Interface type	Ethernet: 1000BaseT/100Base-TX/10Base-T, USB 2.0 Hi-speed, 2 x USB Host (2.0), 1 x USB port for USB DEVICE PORT-E4 which adds 1 x USB Host (2.0)
		Network protocols	TCP/IP* (LPD / Port 9100 / WSD / IPP / IPPS / SMB** / FTP) *IPv4/IPv6 support **SMB Print is not supported
		Processor speed	1.67 Ghz
		Memory	1.0 GB + 1.0 GB
		Hard Disk drive	250 GB(Usable space 215 GB)
		Control panel	17.8 cm (7 inch) WVGA Colour TFT LCD Touch & Tilttable Panel

Technical Specifications

imageRUNNER ADVANCE C3320, C3320i, C3325i, C3330i

Dimensions (W x D x H)

C3330i / C3325i / C3320i:
Standard: 565 mm x 693 mm x 878 mm
Optional:
With Cassette Feeding Unit-AL1: 565 mm x 693 mm x 1126mm
With Pedestal Unit-H1: 565 mm x 693 mm x 1126mm
C3320:
Standard: 565 mm x 665 mm x 777 mm
Optional:
With Cassette Feeding Unit-AL1: 565 mm x 665 mm x 1025mm
With Pedestal Unit-H1: 565 mm x 665 mm x 1025 mm

Installation space (W x D)

C3330i / C3325i / C3320i:
978 mm x 1117 mm (W: Right cover open + Multi-purpose tray open, D: Cassette drawers open)
1110 mm x 1117 mm (W: Inner Finisher Tray Extended + Right cover open + Multi-purpose tray open, D: Cassette drawers open)
1655 x 1117 mm (W: External Finisher Tray Extended + Right cover open + Multi-purpose tray open, D: Cassette drawers open)
C3320:
978 mm x 1088 mm (W: Right cover open + Multi-purpose tray open, D: Cassette drawers open)
1110 mm x 1088 mm (W: Inner Finisher Tray Extended + Right cover open + Multi-purpose tray open, D: Cassette drawers open)
1655 x 1088 mm (W: External Finisher Tray Extended + Right cover open + Multi-purpose tray open, D: Cassette drawers open)

Weight

C3330i / C3325i / C3320i:
Approx. 71.2kg excluding toner (Approx.74.1 including Toner), 87.3kg with Cassette Feeding Unit-AL1
C3320:
Approx. 64.2kg excluding toner (Approx.67.1 including Toner), 83.2kg with Cassette Feeding Unit-AL1

Operating environment

Temperature: 10 to 30°C (50 to 86°F)
Humidity: 20 to 80 % RH (no condensation)

Power source

220-240 V (±10 %), 50/60 Hz (±2 Hz), 4.0AMP

Power consumption

Maximum: Approx. 1.5 KW
Standby: Approx. 53.4Wh
Sleep mode: Approx. 0.8 W or less ⁴
Idle time required to enter sleep mode: minimum 10 sec / default 60 sec
Plugin-off: 0.1W or less (Normal mode) / 0.45W or less (Quick Start mode)
Idle time required to enter plugin-off mode: default 4 hours
Typical Electricity Consumption (TEC) rating ⁵:
C3330i: 1.2kwh
C3325i: 0.9kwh
C3320i: 0.8kwh
C3320: 0.8kwh

Noise levels Sound Pressure⁶ (reference data, LpAm, Bystander's position)

Active: 49dB (C3330i / C3325i) 48dB (C3320i / C3320)
Standby: 14dB (All models)

Software and printer management 1

MEAP
MEAP Web
Universal Login Manager
Mobile PRINT & SCAN
Canon Mobile Printing and Scanning

Software and printer management 2

iW Management Console, Compatible with eMaintenance services via embedded RDS; Content Delivery System; Canon Driver Configuration Tool (Available via service only); Remote User Interface (RUI); Remote Operators Software

Security features

Standard:
IP/Mac Address Filtering, IPSEC, SNMP V3.0, IEEE 802.1X, Trusted Platform Module (TPM), Secure Print, HDD Password Lock, Data Erase, Mailbox, Department ID, User Authentication, Access Management System.

Optional:
Universal Login Manager ⁷, Encrypted Secure Print, Encrypted PDF, HDD Encryption, User and Device signatures, Secure Watermarks, Document Scan locking, HDD removal.
following items require uniFLOW: My Print Anywhere secure print, Data Loss Prevention.

Consumables

Toner bottle

C-EXV 49 Black/Cyan/Magenta/Yellow Toner (Yield: BK 36,000/ CMY 19,000 pages⁸)

Specifications for options

Staple Finisher

Staple Finisher 2

Booklet Finisher

Cassette feeding unit

Hardware accessories 1

INNER FINISHER-G1
STAPLE FINISHER-U1 (External)
BOOKLET FINISHER-U1 (External)
CASSETTE FEEDING UNIT-AL1
PLAIN PEDESTAL TYPE-H1
INNER 2WAY TRAY-J1
3WAY UNIT-D1⁹
DADF-AQ1⁹

Hardware accessories 2

COPY TRAY-J2:
UTILITY TRAY-A2
USB DEVICE PORT-E4
STAMP UNIT-B1
MiCARD PLUS for ULM
UF MIFARE 10 CARD PACK
UF HID 10 CARD PACK

Print controller accessories

BARCODE PRINTING KIT-D1
PCL INTERNATIONAL FONT SET-A1
PCL PRINTER KIT BB1⁹
PS PRINTER KIT-BB1⁹
DIRECT PRINT KIT (FOR PDF/XPS)-H1⁹

Document publishing

System accessories

iW DESKTOP
WEB ACCESS SOFTWARE-J1
SUPER G3 FAX BOARD-AR1
SUPER G3 2ND LINE FAX BOARD-AR1
REMOTE FAX KIT-A1
SERIAL INTERFACE KIT-K2
COPY CONTROL INTERFACE KIT-A1
COLOUR UNIVERSAL SEND KIT -AA1⁹

Device security accessories

HDD DATA ENCRYPTION KIT-C9
REMOVABLE HDD KIT-AK1

Document security accessories

DOCUMENT SCAN LOCK KIT-B1
SECURE WATERMARK-B1
ENCRYPTED PRINTING SOFTWARE-D1

Accessibility accessories

Standard:
REMOTE OPERATORS SOFTWARE KIT

Other options

Optional:
ADF ACCESS HANDLE-A1
VOICE GUIDANCE KIT-F2
VOICE OPERATION KIT-C2
STAMP INK CARTRIDGE-C1
STAPLE CARTRIDGE-D3: Saddle staple cartridge for BOOKLET FINISHER-U1.
STAPLE-J1: Plain staples for STAPLE FINISHER-U1, BOOKLET FINISHER-U1
STAPLE-PT: Plain staples for INNER FINISHER-G1

Footnotes

^[1] Please refer to <http://software.canon-europe.com/> for availability of print solutions for other operating systems and environments including AS/400, UNIX, Linux and Citrix. Some of these solutions are chargeable.

^[2] SAP Device Types are available via the SAP Market Place.
* Windows XP support of printer driver will end on April 7, 2015.

^[3] Based on ITU-T Standard Chart No. 1

^[4] 1 watt sleep mode may not be possible in all circumstances. Certain network configurations and options may prevent the device from entering deep sleep mode. Please refer to the user guide for more information

^[5] Typical Electricity Consumption (TEC) rating represents the typical electricity consumed by a product during 1 week, measured in kilowatt-hours (kWh). The test methodology is defined by Energy Star (<http://www.eu-energystar.org>).

^[6] Declared noise emission in accordance with ISO 7779

^[7] Free of charge software available from the software download centre (<http://software.canon-europe.com/>). For configuration and installation services please contact your sales representative for further information.

^[8] Based on 5% coverage

^[9] Option only for C3320

* Refer to local Canon web site

For full information on options available for the iR-ADV C3300 series, please refer to the specification tables on your local Canon web site.

Software and Solutions



Scan to Cloud

Certifications and compatibility



Canon Inc.
canon.com
Canon Europe
canon-europe.com
English edition
© Canon Europa N.V., 2015

Canon (UK) Ltd
Woodhatch
Reigate
Surrey RH2 8BF
Telephone no 01737 220000
Facsimile 01737 220022
canon.co.uk

Canon Ireland
3006 Lake Drive
Citywest, Saggart
Co.Dublin, Ireland
Telephone No: 01 2052400
Facsimile No: 01 2052525
canon.ie

